

State of Rhode Island and Providence Plantations

# Budget



## Fiscal Year 2015

Volume III – Education

Lincoln D. Chafee, Governor

**Dedication**

*This year's budget documents are dedicated to the  
Memory of William V. Golas, Jr.  
Sr. Budget Analyst 1987 - 2013*

*The image on the cover of this year's budget document is a Winter Scene of the State House from Artist John Pitocco of Providence and is reproduced by permission of the artist in collaboration with the Rhode Island State Council on the Arts.*

# Agency

---

## Rhode Island Higher Education Assistance Authority

---

### Agency Mission

The Authority provides a system of financial assistance programs and early outreach/college awareness programs, consisting of the Scholarship and Grant Program, the Tuition Savings Program, and as a guaranty agency in the Federal Family Education Loan Program funds the WaytogoRI.org portal. Together, these programs enhance the aspirations and motivational levels of students and provide tools for educators/administrators in every school district in Rhode Island by: enabling early awareness of the relevance, importance, and value of college and career planning; promoting access to higher education; supporting the state's workforce needs; providing training and tools that support state elementary and secondary school initiatives; and providing financial assistance to qualified students and parents, many of whom are or might be discouraged and/or restricted from participating in post-secondary education because of insufficient financial resources.

### Agency Description

The Higher Education Assistance Authority (RIHEAA or "the Authority") is organized into three divisions which administer respectively: the Scholarship and Grant Program; the Tuition Savings Program (which does business as CollegeBoundfund®), Rhode Island's IRS Section 529 savings program); and the Loan Program. The Scholarship and Grant Program administers various student financial assistance programs funded by general revenue appropriations from the State of Rhode Island, as well as by funds received from the U.S. Department of Education and funds derived from other sources. These programs include State Scholarship/Grant Program, and Rhode Island DCYF Post Secondary Tuition Assistance Programs. The Tuition Savings Program administers the activities of the CollegeBoundfund®, including the student financial assistance programs funded by revenues generated by CollegeBoundfund®. Those student financial assistance programs are the Academic Promise Scholarship Program, the CollegeBoundfund® Matching Grant Program and the CollegeBoundbaby Program. In addition, revenues from CollegeBoundfund® are used to supplement the State Grant Program. The Loan Program administers RIHEAA's activities as the state designated guaranty agency in the Federal Family Education Loan Program (FFELP) assisting students and their parents in financing higher education expenses with federally guaranteed student loans. As part of Loan Program's federally mandated responsibilities to conduct early awareness and college outreach activities, RIHEAA has initiated WaytogoRI.org, an online web portal provided free to all Rhode Island residents, all elementary and secondary schools (public, private and parochial) and post-secondary institutions. WaytogoRI.org allows students, parents and educators to explore education and career options, plan and prepare for college and careers and conduct college and career searches. WaytogoRI.org also supports the Individual Learning Plan required for Rhode Island public school student grades 6-12.

### Statutory History

The Authority was created in 1977 to administer the scholarship, grant and loan programs for the State of Rhode Island, replacing a previously existing loan entity and assuming some functions of the Department of Education. Title 16 Chapter 56 and 57 of the Rhode Island General Laws establish and provide for the organization, functions, and statutory award formula of the Authority. In January of 1997, Chapter 57 was amended to authorize RIHEAA to establish a Prepaid Tuition Program and a Tuition Savings Program. The powers of the authority are vested in a board of directors consisting of nine (9) members, five (5) of whom are appointed by the governor from among members of the general public, who are qualified by training or experience in education finance or personal investment consulting; three (3) of whom are appointed by the governor, who shall give due consideration to the recommendations made by the chairperson of the board of governors for higher education and the Association of Independent Colleges and Universities of Rhode Island for those appointments; and the state general treasurer ex-officio or designee from within the office of the general treasurer. The Board of Directors elects its own chairperson and other officers and appoints an Executive Director to head the Authority.

# The Budget

---

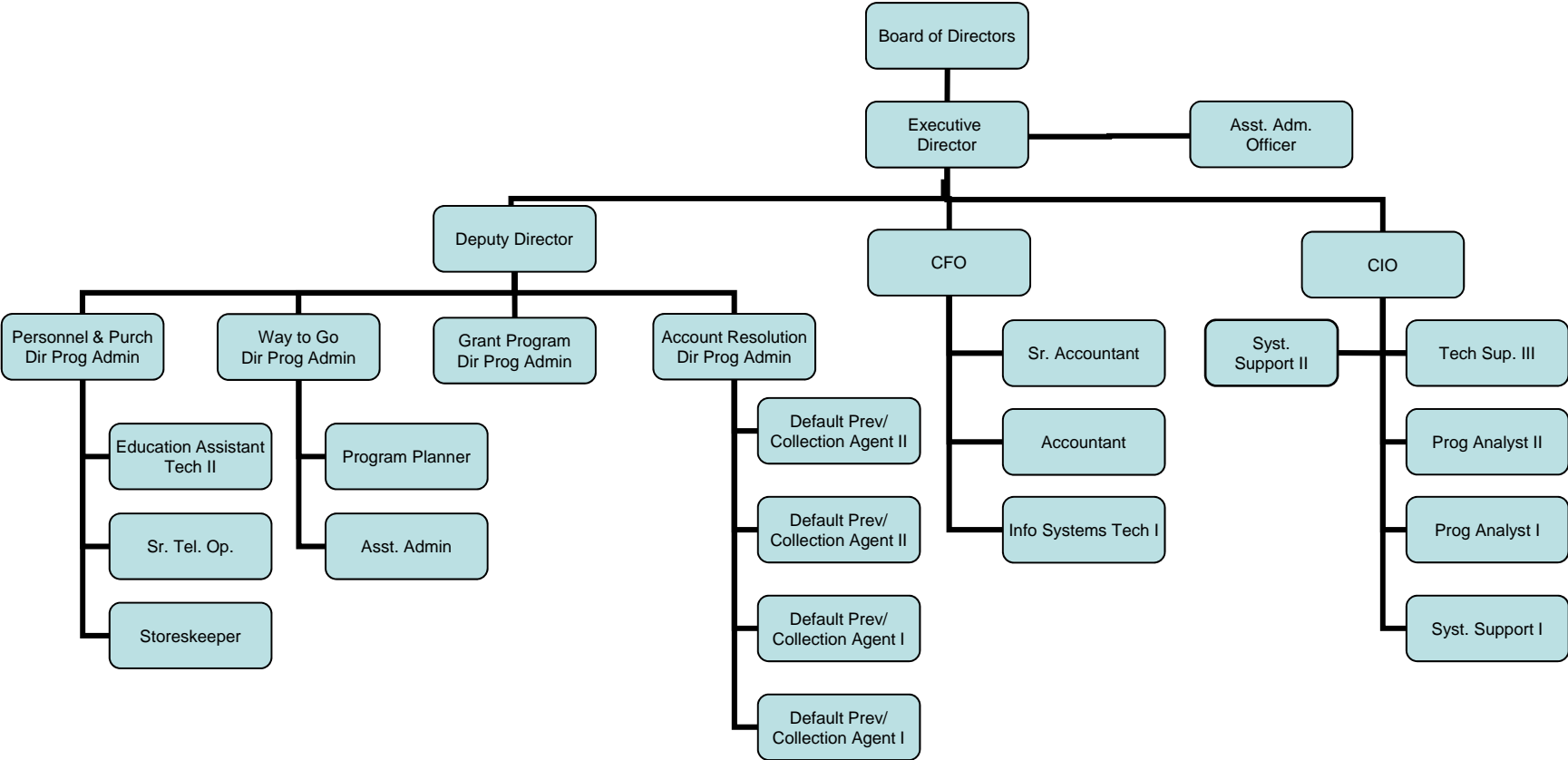
## Rhode Island Higher Education Assistance Authority Central Management

---

	2012 Audited	2013 Audited	2014 Enacted	2014 Revised	2015 Recommend
<b>Expenditures By Subprogram</b>					
Scholarship & Grants/Admin/Fed	5,911,331	5,693,317	4,281,726	4,333,323	4,281,726
Loans/Admin/Federal	9,566,865	10,977,121	13,274,020	12,316,514	13,330,967
Tuition Savings	8,558,270	8,384,454	9,207,989	8,330,082	6,834,268
<b>Total Expenditures</b>	<b>\$24,036,466</b>	<b>\$25,054,892</b>	<b>\$26,763,735</b>	<b>\$24,979,919</b>	<b>\$24,446,961</b>
<b>Expenditures By Object</b>					
Personnel	8,808,808	9,602,229	10,914,563	10,096,596	10,240,235
Operating Supplies and Expenses	1,472,258	1,900,010	2,267,446	2,550,000	1,925,000
Assistance and Grants	13,755,400	13,552,653	13,081,726	12,333,323	12,281,726
<b>Subtotal: Operating Expenditures</b>	<b>24,036,466</b>	<b>25,054,892</b>	<b>26,263,735</b>	<b>24,979,919</b>	<b>24,446,961</b>
Capital Purchases and Equipment	-	-	500,000	-	-
<b>Total Expenditures</b>	<b>\$24,036,466</b>	<b>\$25,054,892</b>	<b>\$26,763,735</b>	<b>\$24,979,919</b>	<b>\$24,446,961</b>
<b>Expenditures By Funds</b>					
General Revenue	5,911,331	5,693,317	4,281,726	4,333,323	4,281,726
Federal Funds	9,566,865	10,977,121	13,274,020	12,316,514	13,330,967
Other Funds	8,558,270	8,384,454	9,207,989	8,330,082	6,834,268
<b>Total Expenditures</b>	<b>\$24,036,466</b>	<b>\$25,054,892</b>	<b>\$26,763,735</b>	<b>\$24,979,919</b>	<b>\$24,446,961</b>

# The Agency

## Rhode Island Higher Education Assistance Authority



# Personnel

## Rhode Island Higher Education Assistance Authority Agency Summary

	Grade	FY 2014		FY 2015	
		FTE	Cost	FTE	Cost
Classified		24.0	1,409,619	24.0	1,421,240
Unclassified		1.0	48,118	1.0	48,118
<b>Subtotal</b>		<b>25.0</b>	<b>\$1,457,737</b>	<b>25.0</b>	<b>\$1,469,358</b>
Cost Allocation from Other Programs		-	167,624	-	167,898
Cost Allocation to Other Programs		-	(\$167,624)	-	(\$167,898)
Reconcile to FTE Authorization		(2.0)	-	-	-
Turnover		-	(\$51,345)	-	-
<b>Subtotal</b>		<b>(2.0)</b>	<b>(\$51,345)</b>	<b>-</b>	<b>-</b>
<b>Total Salaries</b>		<b>23.0</b>	<b>\$1,406,392</b>	<b>25.0</b>	<b>\$1,469,358</b>
<b>Benefits</b>					
Payroll Accrual			7,805		7,891
FICA			107,665		112,482
Retiree Health			86,720		87,169
Health Benefits			291,872		345,871
Retirement			306,370		325,016
<b>Subtotal</b>			<b>\$800,432</b>		<b>\$878,429</b>
<b>Total Salaries and Benefits</b>		<b>23.0</b>	<b>\$2,206,824</b>	<b>25.0</b>	<b>\$2,347,787</b>
<b>Cost Per FTE Position (Excluding Temporary and Seasonal)</b>			<b>\$95,949</b>		<b>\$93,911</b>
<b>Statewide Benefit Assessment</b>			<b>\$59,772</b>		<b>\$62,448</b>
<b>Payroll Costs</b>		<b>23.0</b>	<b>\$2,266,596</b>	<b>25.0</b>	<b>\$2,410,235</b>
<b>Purchased Services</b>					
Management & Consultant Services			7,615,000		7,615,000
Legal Services			215,000		215,000
<b>Subtotal</b>			<b>\$7,830,000</b>		<b>\$7,830,000</b>
<b>Total Personnel</b>		<b>23.0</b>	<b>\$10,096,596</b>	<b>25.0</b>	<b>\$10,240,235</b>
<b>Distribution By Source Of Funds</b>					
General Revenue		(2.0)	-	-	-
Federal Funds		25.0	\$9,796,514	25.0	\$9,935,967
Other Funds		-	\$300,082	-	\$304,268
<b>Total All Funds</b>		<b>23.0</b>	<b>\$10,096,596</b>	<b>25.0</b>	<b>\$10,240,235</b>

# Personnel

## Rhode Island Higher Education Assistance Authority Central Management

	Grade	FY 2014		FY 2015	
		FTE	Cost	FTE	Cost
<b>Classified</b>					
DEPUTY DIRECTOR, RI HIGHER EDUCATION	00143A	1.0	116,479	1.0	116,479
ASSISTANT DIRECTOR FINANCIAL AND CONTRACT	00141A	1.0	106,620	1.0	106,620
PROGRAMMER/ANALYST MANAGER	00138A	1.0	102,040	1.0	102,040
TECHNICAL SUPPORT SPECIALIST III	00135A	1.0	86,481	1.0	86,481
PROGRAMMER/ANALYST II (UNIX/SQL)	00132A	1.0	75,122	1.0	75,122
DIRECTOR OF PROGRAM ADMINISTRATION	00131A	3.0	208,387	3.0	210,493
PROGRAMMER/ANALYST I (UNIX/SQL)	00128A	1.0	58,417	1.0	58,417
DEPARTMENT MANAGER - RIHEAA	00124A	1.0	50,825	1.0	51,275
SENIOR ACCOUNTANT	00323A	1.0	50,449	1.0	50,449
SYSTEMS SUPPORT TECHNICIAN II	00321A	1.0	50,246	1.0	50,246
SYSTEMS SUPPORT TECHNICIAN I	00318A	1.0	46,510	1.0	47,479
SENIOR TELEPHONE OPERATOR	00B13A	1.0	46,019	1.0	46,019
INFORMATION SERVICES TECHNICIAN I	00316A	1.0	45,484	1.0	45,484
PROGRAM PLANNER	00125A	1.0	44,640	1.0	46,283
ASSISTANT ADMINISTRATIVE OFFICER	00121A	1.0	44,207	1.0	45,380
DEFAULT PREVENTION/COLLECTION AGENT II	00318A	2.0	86,745	2.0	87,978
ACCOUNTANT	00320A	1.0	42,166	1.0	43,181
STOREKEEPER	00315A	1.0	40,291	1.0	41,128
EDUCATION ASSISTANCE TECHNICIAN II	00316A	1.0	36,887	1.0	37,785
DEFAULT PREVENTION/COLLECTION AGENT I	00316A	2.0	71,604	2.0	72,901
<b>Subtotal</b>		<b>24.0</b>	<b>\$1,409,619</b>	<b>24.0</b>	<b>\$1,421,240</b>
<b>Unclassified</b>					
ASSISTANT ADMINISTRATIVE OFFICER	00821A	1.0	48,118	1.0	48,118
<b>Subtotal</b>		<b>1.0</b>	<b>\$48,118</b>	<b>1.0</b>	<b>\$48,118</b>
Cost Allocation from Other Programs		-	167,624	-	167,898
Cost Allocation to Other Programs		-	(167,624)	-	(167,898)
Turnover		-	(51,345)	-	-
<b>Subtotal</b>		<b>-</b>	<b>(\$51,345)</b>	<b>-</b>	<b>-</b>
<b>Total Salaries</b>		<b>25.0</b>	<b>\$1,406,392</b>	<b>25.0</b>	<b>\$1,469,358</b>
<b>Benefits</b>					
Payroll Accrual			7,805		7,891
FICA			107,665		112,482
Retiree Health			86,720		87,169
Health Benefits			291,872		345,871
Retirement			306,370		325,016
<b>Subtotal</b>			<b>\$800,432</b>		<b>\$878,429</b>
<b>Total Salaries and Benefits</b>		<b>25.0</b>	<b>\$2,206,824</b>	<b>25.0</b>	<b>\$2,347,787</b>
<b>Cost Per FTE Position (Excluding Temporary and Seasonal)</b>			<b>\$88,273</b>		<b>\$93,911</b>
<b>Statewide Benefit Assessment</b>			<b>\$59,772</b>		<b>\$62,448</b>
<b>Payroll Costs</b>		<b>25.0</b>	<b>\$2,266,596</b>	<b>25.0</b>	<b>\$2,410,235</b>

# Personnel

## Rhode Island Higher Education Assistance Authority Central Management

	Grade	FY 2014		FY 2015	
		FTE	Cost	FTE	Cost
<b>Purchased Services</b>					
Management & Consultant Services			7,615,000		7,615,000
Legal Services			215,000		215,000
<b>Subtotal</b>			<b>\$7,830,000</b>		<b>\$7,830,000</b>
<b>Total Personnel</b>		<b>25.0</b>	<b>\$10,096,596</b>	<b>25.0</b>	<b>\$10,240,235</b>
<b>Distribution By Source Of Funds</b>					
Federal Funds		25.0	\$9,796,514	25.0	\$9,935,967
Other Funds		-	\$300,082	-	\$304,268
<b>Total All Funds</b>		<b>25.0</b>	<b>\$10,096,596</b>	<b>25.0</b>	<b>\$10,240,235</b>



# Performance Measures

## Rhode Island Higher Education Assistance Authority Central Management

### *Grant Recipients*

Each year, the Rhode Island Higher Education Assistance Authority (RIHEAA) awards grants and scholarships to more than 12,000 students. Eligibility for state grants is determined using a calculation of financial need, which includes family resources, tuition, room and board and fees, and other forms of financial aid available to the student. The figures below represent the percentage of eligible students receiving state grants.

	2011	2012	2013	2014	2015
<b>Target</b>	70%	70%	70%	70%	70%
<b>Actual</b>	48.7%	52.2%	53.4%	60%	--

Performance for this measure is reported by state fiscal year and is current as of 9/30/2013.

### *Grant Awards*

These figures represent the average award made to Rhode Island students.

	2011	2012	2013	2014	2015
<b>Target</b>	--	\$1128	\$1128	\$1128	\$1128
<b>Actual</b>	\$761	\$599	\$607	\$677	--

Performance for this measure is reported by state fiscal year and is current as of 9/30/2013.

### *WaytoGoRI Web*

RIHEAA provides and funds the WaytoGoRI portal as part of its Guaranty Agency operations. It provides education and financial planning information free of charge to all Rhode Island students, families and schools. These figures represent the total number of views users have made in the WaytoGoRI portal during the year.

	2011	2012	2013	2014	2015
<b>Target</b>	--	--	--	4200000	4200000
<b>Actual</b>	--	3174837	3925588	2248766	--

Performance for this measure is reported by calendar year and is current as of 9/30/2013.

### *Revenue Transferred to RI Scholarship and Grant Programs*

These figures represent the amount of revenue that is used to fund student financial assistance programs that benefit Rhode Island students and families.

	2011	2012	2013	2014	2015
<b>Target</b>	--	--	\$8800000	\$6500000	\$7500000
<b>Actual</b>	\$6300000	\$8341000	\$8250000	\$8800000	--

Performance for this measure is reported by state fiscal year and is current as of 9/30/2013.